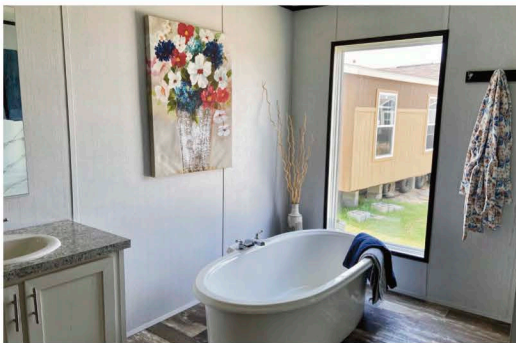


A MODERN FARMHOUSE DESIGN HOME

The Johnson 3/2, 1717 sq. ft. open concept home



The Johnson 3/2 mobile home is a modern farmhouse design featuring an inviting living space with rustic ceiling beam accents. The kitchen and dining area is filled with natural light and the master bathroom features a oval stand alone tub and 60" walk-in shower, a must see home!



3/2 Johnson Home

- Farmhouse Design
- Kitchen Storage Island
- Handcrafted Wood Cabinets
- Endless Kitchen Counter tops
- Ensuite Bathroom
- Dual Sink Vanities



We are located 10 miles south of ABIA Airport on the corner of Hwy. 21 & Hwy. 183.

★
17325 Camino Real
Mustang Ridge, TX 78616
HOTLINE # 512-385-9700



Leti Jones

Home Consultant

Call / Text: (512) 334-4323

Email: leti@villagehomesaustin.com

Fax: (512) 398-3912

17325 Camino Real (Hwy 21)
Mustang Ridge, TX 78616
RBI#: 3223

villagehomesaustin.com

